



## About Us.

**Peace of mind & Value for Money will you get, when you hand over your work to Scube .**

**We have perfected managing and producing a number of events and exhibition pavilions all around India.**

**Our expertise covers all the aspects of Event like Planning, Management, Co-ordination and Execution.**

**We deliver professionalistic and cost efficient events without compromising on the quality of output. We provide & deliver innovative Event & services on time faultlessly.**

.





# ***WE DO***

**Entertainment Programs**  
**Exhibitions**  
**Product launches**  
**Conferences**  
**Inaugurations**  
**Special Events**  
**Promotions etc...**



# *Gallery*



# RADIANCE REALTY

**NORTH  
CHENNAI**  
PERAMBUR



www.radiance Realty.in

DELIVERING HOME DREAMS,  
FULFILLING LIFESTYLE ASPIRATIONS

RADIANCE  
REALTY

70+ 25+ 15+ 8K+

RADIANCE  
REALTY

www.radiance Realty.in



THIS YEAR MAKE A  
**SMART  
BEGINNING**

WITH  
\*\* NIMMS PANNER! \*\*

**Arete Homes**

Smart Integrated Township



**PRIME LIFESPACE**

Bright Ideas - Smart Solutions

**Arete Homes**

Get Assured Rental  
Income for 3 Years!

2 BHK - 50 lakhs\*

**32000**

Rent Per Month

3 BHK - 85 lakhs\*

**48000**

Rent Per Month

**RENT @ EMI**

Make Your Smart  
Investment Today!



LAUNCHING AN  
**EXCLUSIVE  
COLLECTION**



THE LARGEST  
**SMART TOWNSHIP  
OF NORTH CHENNAI**

**Arete Homes**



ENJOY  
**HIGHEST  
RENTAL**  
IN THE COUNTRY!

**Arete Homes**

# NAVIN'S

# NAVIN'S

114 Lifestyle Apartments



1.5 - 2.500  
1000 - 1500 sq.ft.

NAVIN'S

23 Lakeside Villas



1.500 - 2.500  
1000 - 1500 sq.ft.

The perfect home option  
for 7-1000 sq.ft.



Single, well-connected to  
amenities and area



Single, well-connected to  
amenities and area



Single, well-connected to  
amenities and area

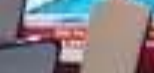
Single, well-connected to  
amenities and area



Single, well-connected to  
amenities and area



Single, well-connected to  
amenities and area



Single, well-connected to  
amenities and area

NAVIN'S

NAVIN'S







**BBCL**  
Adding Life To Living  
A Vibrant Existence

**BBCL**  
Adding Life To Living

**BBCL**  
Adding Life To Living  
A Vibrant Existence



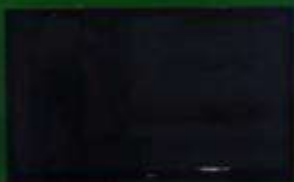




BOLLINENI  
Hillside 2  
90th Anniversary

Hillside 2

Hillside 2



SBT

1300

2



# TIRUPATI TRADERS

**BARTOLI**  
SHANK BOARD FOR FOOTWEAR

**BONTTEX**  
CELLULOSE WOLF SHEET

**MASOHEEL**  
HIGHWAYS MIRARD FOR HEEL

**Suole**  
RUBBER SOLING SHEETS

TIRUPATI TRADERS

**MASOHEEL**

**Suole**  
RUBBER SOLING SHEETS







ITC'S HOTEL GROUP

ITC HOTELS  
RESPONSIBLE LUXURY

THE LUXURY COLLECTION

FORTUNE

Member ITC's hotel group



WELCOMHOTEL

Member ITC's hotel group



WelcomHeritage

Member ITC's hotel group



MEMBER GROUP OF HOTELS

ITC HOTELS WELCOMHOTEL FORTUNE







TIRUPATI TRADERS

TIRUPATI TRADERS

TIRUPATI TRADERS

TIRUPATI TRADERS



TIRUPATI TRADERS



TIRUPATI TRADERS TIRUPATI TRADERS







CSM

CSM

CSM

CSM

CSM

CSM

CSM

CSM

CSM

CSM



NO SMOKING



**JAIN PUBLIC SCHOOL**  
SCHOOL FOR GURU  
650  
LEASERS  
BY BIDDING  
4000 5000  
www.amarprakash.in

**UPGRADE YOUR HOME  
YOUR LIFESTYLE**

**15th  
Lifestyle  
5Star  
Project**  
4000 5000  
www.amarprakash.in

*The Royal Castle*







SAFETY PRODUCTIVITY - CONVENIENCE

mtandt

marketing@mtandt.com

www.mtandt.com

PM



# JAINHOUSING



**AVAIL HOME LOAN @ 4.99%**

ONLY FOR 3 DAYS

**AVAIL HOME LOAN @ 4.99%**

ONLY FOR 3 DAYS

**AVAIL HOME LOAN @ 4.99%**

ONLY FOR 3 DAYS

**AVAIL HOME LOAN @ 4.99%**

ONLY FOR 3 DAYS

Salpuzee

Adarsh

Adarsh

Adarsh

Therapark

Adarsh

Adarsh

Adarsh







ROAD AND MINERAL TECHNOLOGIES



LIAMM

Wirtgen  
WIRTGEN GROUP



ROAD AND MINERAL TECHNOLOGIES

mers

Wirtgen





**BHARAT  
SURGICAL CO.**

**OSRAM**



Technology included





**BHARAT  
SURGICAL CO.**

[www.bharatsurgical.com](http://www.bharatsurgical.com)



**BHARAT  
SURGICAL CO.**

*Best quality prices*





# BOLLINENI Hillside 2



BOLLINENI HILLSIDE Phase 2

BOLLINENI HILLSIDE 2

Contact: 044 27771000 / 1800-40-1819



92 Acres Integrated Township  
1300 families have already discovered the good life

hillside.com



**BSCPL**  
Building better lives







**Rajguru Adhesive Tape Co. (P) Ltd.**  
ISO 9001-2008 & Certificate Company



www.bmshahgroup.com

A MULTI PRODUCTS TAPES COMPANY  
Offering International quality

**GOOD SERVICE**  
HUNDREDS OF THOUSANDS OF TAPES  
for thousands of applications

**NO. 1 LEADING COMPANY**  
IN SUPPLYING ADHESIVE TAPES

**OVER 52 PRODUCTS**  
AND MORE TO SERVE

**GUARANTEED SIZE AND LENGTH**  
"INTERNATIONAL QUALITY"  
APPROVED PRODUCTS

**STATE OF ART**  
MANUFACTURED IN CHINA  
SATISFACTORY  
GUARANTEE



# MODERN ELECTRICALS

# SELE

Creating Best

Multifunction Meter



LED/LCD Meter



PLUG-N-WIRE



Protection Relays



Timers



Digital Counters



SE



CBRE  
propfair



**H2** Launching  
BOLLINENI HILLSIDE Phase 2

[www.bollinenihillside.com](http://www.bollinenihillside.com)

Contact: 944 22772000 / 1800 425 7879

**H2** ATTRACTIVE  
PRE LAUNCH OFFER

[www.bollinenihillside.com](http://www.bollinenihillside.com)

Contact: 944 22772000 / 1800 425 7879

**BSCPL**  
Building better lives



- MADE IN INDIA
- 20 YEARS OF MANUFACTURING EXPERIENCE
- HIGH RELIABILITY
- RoHS, MSD & CE CERTIFIED



SAVE ENERGY  
MORE THAN  
**50%**  
ON LIGHTING LEAD  
3 YEARS WARRANTY

LED TUBE LIGHT SERIES



LED PANELS

RECYCLE MODELS



Lights for your mood

Long Life - upto  
50,000 burning hours

Durata Quality  
Study Concerns





BOLLINEN  
GMR, Chennai

FAIRPRO  
2014

FAIRPRO  
2014

BOLLINEN  
GMR, Chennai

+91 44 22775500 / 90940 44492



DE Healthcare **CURA**

Time-Strain Analysis

Time-Strain Analysis  
The combination of integrated information

...

...

...



...

...

...

...

...

...



**SIEMENS**







## Bar Counter set up







**Contact as:**  
**L.Kamalakaran**  
***Scube corporate solutions***  
***DABC Aiswaryam phase 2,***  
***# E1- 15, 4<sup>th</sup> floor,***  
***Nolambbur, west mogappair,***  
***Chennai-600 037.***  
***Ph☺9500009232***  
***Mail.kamal.scube@gmail.com***



***Thank you***

